

SENSE · PRODUCT DATA SHEET

# AS-BL

Sense Connected Baton · Tri-Proof

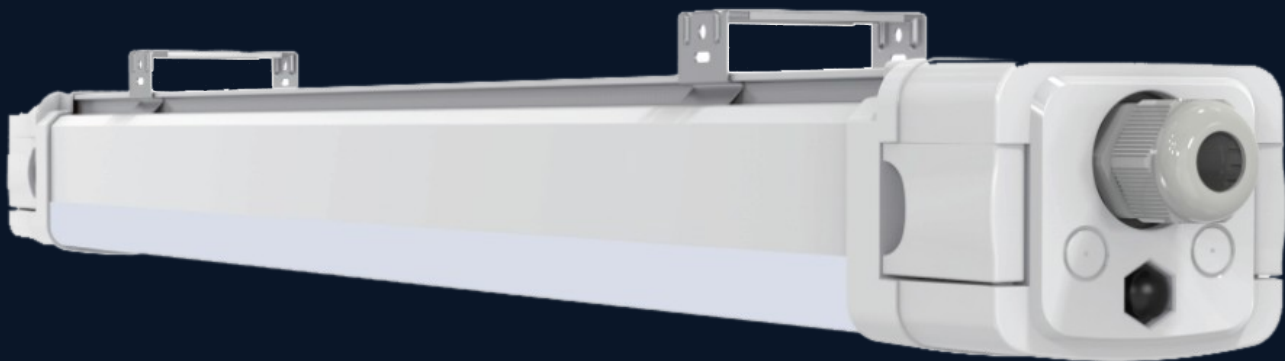
***Sealed. Connected. Anywhere.***

IP66 wet-location rated tri-proof baton for warehouses, basements, tunnels, car parks, and industrial environments. Native to the Sense Bluetooth mesh — every fixture is a node, every node a sensor. 20 - 50 W in three lengths (2 / 4 / 5 ft), single 120° native beam, dust-, water-, and corrosion-proof.

120° NATIVE  
BEAMIP66 ·  
TRIPROOF

0-10V · SENSE

220-240VAC



AVAILABLE WITH\*

Sense™

## OPTICAL PERFORMANCE

# Three lengths.

*One sealed platform. One optical system. Three configurations.*

<p><b>20W</b></p> <p>2 ft Baton</p> <p>Length · 600 mm</p> <hr/> <p>Lumens · 4000K <b>3,250 lm</b></p> <p>Wattage <b>20 W typ</b></p> <p>Native Beam <b>120° (F - Native)</b></p> <p>CRI <b>80 standard</b></p> <p>Efficacy <b>130 lm/W typ</b></p> <p>Control <b>0-10V (100 - 1%)</b></p> <p>Mesh <b>Sense BLE · optional</b></p>	<p><b>30W</b></p> <p>4 ft Baton</p> <p>Length · 1200 mm</p> <hr/> <p>Lumens · 4000K <b>3,900 lm</b></p> <p>Wattage <b>30 W typ</b></p> <p>Native Beam <b>120° (F - Native)</b></p> <p>CRI <b>80 standard</b></p> <p>Efficacy <b>130 lm/W typ</b></p> <p>Control <b>0-10V (100 - 1%)</b></p> <p>Mesh <b>Sense BLE · optional</b></p>	<p><b>50W</b></p> <p>5 ft Baton</p> <p>Length · 1500 mm</p> <hr/> <p>Lumens · 4000K <b>6,500 lm</b></p> <p>Wattage <b>50 W typ</b></p> <p>Native Beam <b>120° (F - Native)</b></p> <p>CRI <b>80 standard</b></p> <p>Efficacy <b>130 lm/W typ</b></p> <p>Control <b>0-10V (100 - 1%)</b></p> <p>Mesh <b>Sense BLE · optional</b></p>
--	---	---

## OPTICAL ACCESSORIES

Available CCTs: 2700K · 3000K · 3500K · 4000K · Dynamic White (2700 - 4000K)

*All variants share the same sealed housing and integral lead. Quick-connect accessories available.*

## ELECTRICAL · ALL VARIANTS

Input Voltage	220-240VAC, auto-ranging, 50/60Hz
Power Consumption	20 / 30 / 50 W (typ. steady state)
Power Factor	>0.95 @ 220VAC
Surge	4kV maximum common (Gnd to L, Gnd to N)

MECHANICAL · ENVIRONMENT · COMPLIANCE

# Built for the seal.

*Tri-proof across all lengths.*

## Mechanical

### Dimensions

600 × 60 × 74 mm · 2 ft  
1200 × 60 × 74 mm · 4 ft  
1500 × 60 × 74 mm · 5 ft

### Weight

0.95 kg · 2 ft  
1.47 kg · 4 ft  
≈ 1.95 kg · 5 ft

### Housing

Aluminum  
Sealed end-caps

### Lens

Polycarbonate, clear

### Connections

Integral lead  
Quick connectors avail.

### Mounting

Surface · Suspension

## Environment

### Operating Temp

-30 to 50° C (-22 to 122° F)

### Startup Temp

-20 to 50° C (-4 to 122° F)

### Storage Temp

-40 to 80° C (-40 to 176° F)

### Ingress Rating

IP66 — Dry / Damp / Wet

### Impact

IK10 standard

### Vibration

ANSI C136.31, 3G

### Humidity

0 – 95%, non-condensing

### Corrosion

ASTM B117 > 1,500 hrs

## Compliance

### Approbation

CE

### Location

Dry · Damp · Wet (IP66)

### Standards

ANSI C136.31  
ASTM B117  
IEC 60529 (IP)  
IEC 62262 (IK)

### RoHS

Compliant

### Patent Portfolio

Protected by an 80+  
patent portfolio across  
US, EU, Asia

AVAILABLE WITH\*

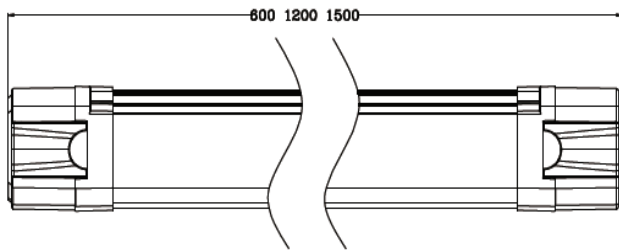
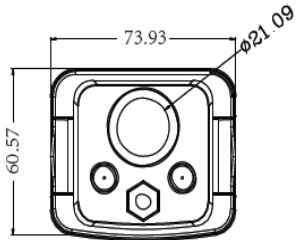
# Sense™

D I M E N S I O N S · P H O T O M E T R I C S

# Geometry and output.

Three lengths · 30W (4 ft) reference (120° native, 4000K, 80CRI)

## Dimensions



All dimensions in mm. Detailed CAD drawings available on request.

## Photometrics

ASBL-30-F · 30W · 120° Native · 4000K · 80CRI

Beam Angle	<b>120°</b>
Lumens	<b>3,900 lm</b>
Input Power	<b>30 W</b>
Efficacy	<b>130 lm/W</b>
Peak Candela	<b>810 cd</b>

### ZONAL LUMEN SUMMARY

Zone (°)	Lumens	% Lum.
0-30	1,930	49.5
0-40	3,040	78.0
0-60	3,820	98.0
60-90	78	2.0
0-90	3,900	100.0

### CENTER BEAM · BEAM WIDTH

HEIGHT · FC / LX · BEAM Ø (m)

2.0 m	200 / 2152	6.9
3.0 m	89 / 957	10.4
4.0 m	50 / 538	13.9
5.0 m	32 / 344	17.3
6.0 m	22 / 239	20.8

Full IES photometric files for each wattage and beam option available at [arco-illumination.com](http://arco-illumination.com) or on request.

C O N T A C T

## Specify AS-BL.

Singapore HQ

Arco Illumination Pte. Ltd.  
No. 8 Penjuru Lane  
Singapore, 609189

Online

[arco-illumination.com](http://arco-illumination.com)  
[info@arco-illumination.com](mailto:info@arco-illumination.com)

OEM · Distributor

[partnerships@arco-illumination.com](mailto:partnerships@arco-illumination.com)

Protected by an 80+ patent portfolio granted and pending across US, EU, Asia.

© 2026 Arco Illumination Pte. Ltd. All rights reserved. Specs subject to change.